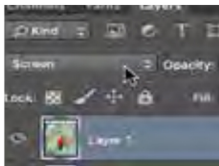


## PHOTOSHOP SCREENING TECHNIQUE TO USE IN AFTER EFFECTS



### MERGE THE BIRD WITH THE MASK

1. In Photoshop, open bird.jpg and maskA.jpg. Select, copy and paste the bird into maskA.jpg
2. Set the blend mode of the bird layer to Screen—



This overlays the bird image onto the brushstroke.

3. Use the Move tool to position the bird within the mask approximately as follows—



This process is like composing within a frame. In most cases, a slightly off-center composition is more interesting than a centered composition.

4. Choose Layer>Flatten Image.

This collapses the layers into one layer. After saving, you cannot undo this operation.

5. Choose Image>Adjustments>Invert.

The image needs to be inverted to work properly as a mask. The black areas will be opaque.

6. Choose Image>Adjustments>Vibrance. Set Saturation to -100 and then click on OK.

This changes the image to black-and-white. You can skip this step if desired because Photoshop will automatically convert a mask into black and white when an image is pasted into a mask layer.

7. Save this image as bird with mask.jpg.

You do not need to save the Photoshop document.

### **MERGE THE HOUSE WITH THE MASK**

1. Open house.jpg and maskB.jpg. Select, copy and paste the house into maskB.jpg

2. Set the blend mode of the house layer to Screen.

3. Position the house within the mask approximately as follows—



4. Choose Layer>Flatten Image.

This collapses the layers into one layer.

5. Choose Image>Adjustments>Invert.

The image needs to be inverted to work properly as a mask. The black areas will be opaque.

6. Choose Image>Adjustments>Vibrance. Set Saturation to -100 and then click on OK.

This changes the image to black-and-white. You can skip this step if desired because Photoshop will automatically convert a mask into black and white when an image is pasted into a mask layer.

7. Save this image as house with mask.jpg.

You do not need to save the Photoshop document.

### **MERGE THE PALM TREE WITH THE MASK**

1. Open palm.jpg and maskC.jpg. Select, copy and paste the palm into maskC.jpg

2. Set the blend mode of the palm layer to Screen.

3. Position the palm within the mask approximately as follows—



4. Choose Layer>Flatten Image.

5. Choose Image>Adjustments>Invert.

6. Choose Image>Adjustments>Vibrance. Set Saturation to -100 and then click on OK.

You can skip this step if desired.

7. Save this image as palm with mask.jpg.

You do not need to save the Photoshop document.

### **COPY AND PASTE MASKS INTO A NEW PHOTOSHOP DOCUMENT**

1. Choose File>New. Enter the following settings and then click on OK—

Name: Target document  
Width: 1000 Pixels (not Inches)  
Height: 1500 Pixels (not Inches)  
Resolution: 300 Pixels/Inch  
Color Mode: RGB Color

2. Choose Layer>New>Layer and then click on OK.

This creates a new layer.

3. Set the Foreground color to red—



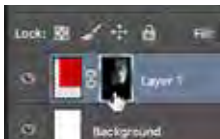
4. Choose Edit>Fill. Make sure Use: Foreground Color is selected and that Preserve Transparency is not checked. Then click on OK.

The layer fills with red.

5. Choose Layer>Layer Mask>Hide All.

This creates a new mask attached to the red layer. In this mask, any image that is white will allow the contents of the layer (in this case red) to show through.

6. While holding down the option key (or Alt-key on Windows machines) click on this new mask—



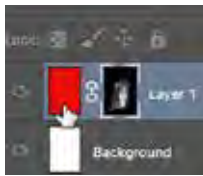
This switches to the mask.

7. Select, copy and paste the bird with mask layer.

The bird with mask image is pasted into the mask.

8. Choose Select>Deselect.

9. Click on the red color in the Layers panel to return to normal view—



This switches back to Photoshop's normal mode. The bird appears in red.

### **ADD THE HOUSE MASK**

1. Choose Layer>New>Layer and then click on OK.

This creates a new layer.

2. Set the Foreground color to a sky blue—



3. Choose Edit>Fill. Make sure Use: Foreground Color is selected and that Preserve Transparency is not checked. Then click on OK.

The layer fills with blue.

4. Choose Layer>Layer Mask>Hide All.

This creates a new mask attached to the blue layer.

5. While holding down the option key click on this new mask.

This switches to the mask.

6. Select, copy and paste the house with mask layer.

The bird with mask image is pasted into the mask.

7. Choose **Select>Deselect**.

8. Click on the blue color in the Layers panel to return to normal view—



The house will appear in blue overlapping the bird. You'll position the layers later.

### **ADD THE PALM MASK**

1. Choose **Layer>New>Layer** and then click on **OK**.

This creates a new layer.

2. Set the Foreground color to orange.—



3. Choose **Edit>Fill**. Make sure **Use: Foreground Color** is selected and that **Preserve Transparency** is not checked. Then click on **OK**.

The layer fills with orange.

4. Choose **Layer>Layer Mask>Hide All**.

This creates a new mask attached to the orange layer.

5. While holding down the option key click on this new mask.

This switches to the mask.

6. Select, copy and paste the palm with mask layer.

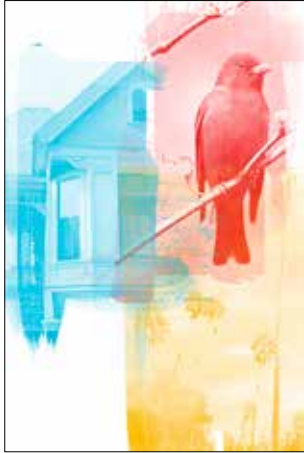
7. Choose **Select>Deselect**.

8. Click on the orange color in the Layers panel to return to normal view.

The palm will appear in orange overlapping the bird and house.

## POSITION THE LAYERS

1. Using the Move tool and Free Transform (Edit>Free Transform) , position and size the layers approximately as follows—



## ADD THE YELLOW PAINT LAYER

The image now has a rough composition but does not look unified. One way to create unity is to add a layer of color behind the layers which will help tie them together. For this section, you'll use a paint mask that has already been created for you.

1. Choose Layer>New>Layer and then click on OK.

This creates a new layer.

2. Set the Foreground color to yellow—



3. Choose Edit>Fill. Make sure Use: Foreground Color is selected and that Preserve Transparency is not checked. Then click on OK.

The layer fills with yellow.

4. Choose Layer>Layer Mask>Hide All.

This creates a new mask attached to the orange layer.

5. While holding down the option key click on this new mask.

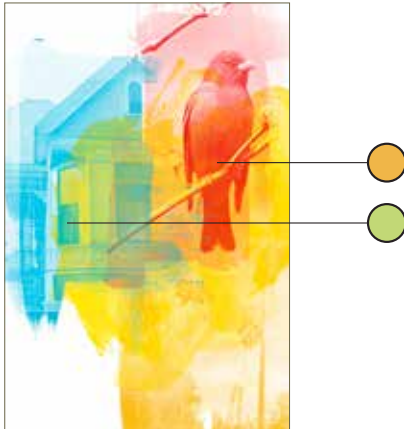
This switches to the mask.

6. Select, copy and paste the palm with mask layer.

7. Choose Select>Deselect.

8. Click on the yellow color in the Layers panel to return to normal view.

9. In the Layers panel, drag the yellow paint layer to the bottom layer. The image should look something like this—



Because the layers are transparent in places, some color mixing occurs. For example, the blue and yellow create green and the red and yellow create orange.

## REFINE THE IMAGE

The image is now done, but there are many things you can do to refine it—

- Use the paintbucket or Image>Adjustments>Hue/Saturation to adjust the colors of the layers as desired.
- To adjust the contrast of a layer, click on the layer's mask then choose Image>Adjustments>Levels.
- Echo colors and values as needed to create integration.
- Create interest by using various strategies to make the different images stand out. For example, make one image pop via background contrast. Make another image pop using saturation.
- Add additional layers below the images to develop contrast and mix colors.