

Supplies:

- 17 x 14 Bienfang 360® Pad
- 17 x 14 or 11 x 14 Tracing Pad
- Fine Point Water base Pen
- Bullet and/or Chisel Solvent base Pen
- #2 Pencil
- #256 white tape
- 18" C-Thru® ruler

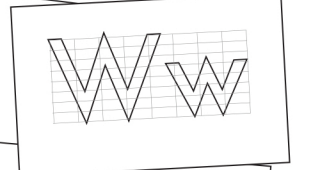
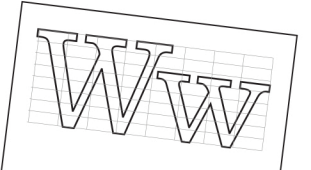
Description:

Upper & lowercase versions of one alphabetical character representing four type categories.

DIRECTIONS

For clarity, measurements are indicated with numerals.

- 1) With pencil, draw complete lines 2" inside the perimeter of a 17 x 14 tracing sheet—be sure to be precise. Then draw 2 pairs of lines, 1" apart, bisecting the sheet horizontally and vertically (a cross). Then tuck this sheet away where it can be protected until you need it.
- 2) Choose an alphabetical character. Since you will be drawing it several times, it is suggested that you select something interesting and more challenging than an "L" or "I."
- 3) Using Illustrator® or InDesign® (not PhotoShop®), create several upper and lowercase pairings of this character (they should be close but not touching), representing four type categories (styles): 1) Roman, 2) Egyptian, 3) Sans Serif and 4) your choice (Script, Decorative, Stencil, etc.). The uppercase character in each of your pairings should be approximately 2–2.5" tall (disregard point sizes). You are encouraged to create more than four pairings since you must receive approval before proceeding to the next step—and some might work better than others. The visual weight of your pairings should be somewhat consistent (for instance, avoid representing one category with an "Ultra-Light" weight and another with an "Extra Bold" weight—try going with what your eyes tell you).
- 4) Label each of your pairings with its family name and remember it. You will probably be asked the names of the typefaces you are using. No "I don't remember" or "I forgot"!
- 5) Create a 64-segment grid over each of your approved pairings (computer is easiest), making sure that each grid touches the perimeter of its respective pairing.
- 6) With a thin pen, proportionately enlarge each grid so that it is 3.5" in height (quarter sheets of tracing paper seem to work best). Each grid should be comprised of 18 precisely drawn lines. Be sure to label each grid with the family name of the character it represents.
- 7) Using a sharp #2 pencil, enlarge your approved character pairings by drawing each in their corresponding grids (use your gridded computer output of pairings as a reference). Don't "color" them in.
- 8) Place your drawings on the 17" x 14" tracing sheet that you tucked away, using the four 6" x 4.5" quadrants as guides (the order, clockwise from the upper left is: Roman, Egyptian, Sans Serif and Miscellaneous). Make sure that they appear straight and somewhat aligned. Once you have determined that they are correct, tape them down with 2-inch pieces of white tape. This taped-up sheet will serve as your guide for inking.
- 9) Place the large taped-up tracing sheet under the first sheet of your 17" x 14" 100% cotton paper pad and tape it lightly for stability. Begin inking. Afterward, make sure you label (in ink) each pairing with its family name (which, of course, you've remembered). Be precise, tasteful and consistent.



5, 6, 7



8, 9

