

Instructor: Omid

E-mail: omid@cpp.edu

Office: 2114

Office Hours: TTH 4:00-4:45pm

Art 251

PROJECT 1

MORTICED CHARACTER

GUIDELINE:

Choose an alphabetical character that you feel is visually interesting. Print or obtain a reproduction of the character so that it is between 2" & 5" at its longest side. Carefully draw a rectangle that touches the perimeter of your alphabetical character. Divide this rectangle into equal sixteenths. Redrawing the rectangle on a 14" x 17" tracing sheet, proportionally enlarge it so that its longest side is 12". Then divide it into equal sixteenths. Carefully redraw the character using your original printed character and grid as a reference (this task may be easier with more grids [48ths]).

Once you have completed the character drawing, carefully divide it into six equal rectangles (to prevent confusion with your other grid, you may want to use a different colored pencil or pen for this). Carefully cut out the six rectangles (you may want to put a small amount of Spray mount underneath your large character drawing prior to cutting, since the individual sections tend to curl when cut).

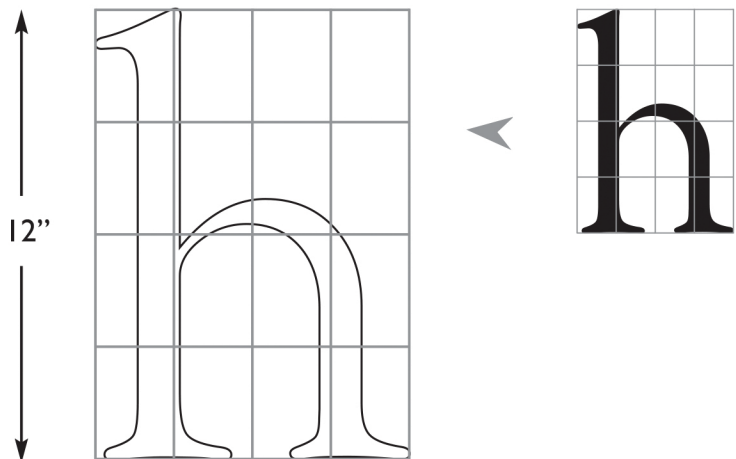
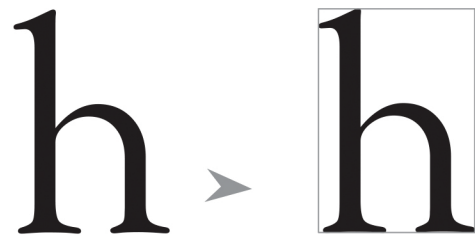
Create a new design by redistributing the six sections, making sure that you keep them contiguous. You may re-angle (90 & 180 degree) and even flop the sections.

Your objectives in redistributing the sections are to [when possible]

- 1) create a completely new design with the original character being unidentifiable,
- 2) a balanced shape,
- 3) equal distribution between positive and negative areas.

When satisfied, carefully trace your results to marker paper, using solvent black markers.

Be sure to center your design.



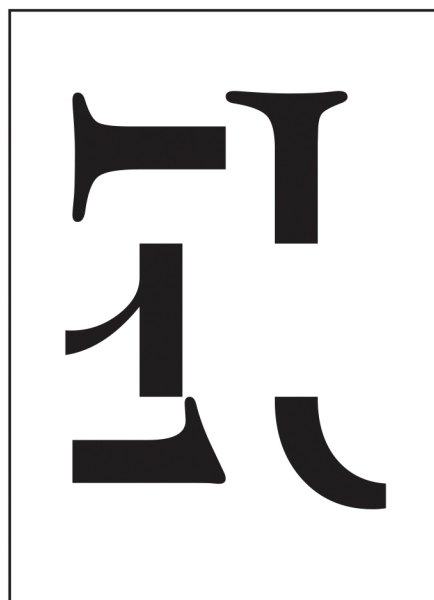
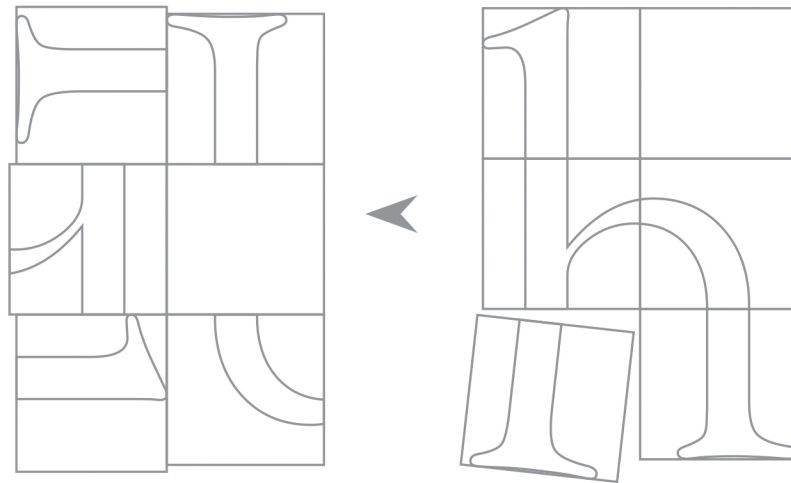
Instructor: Omid

E-mail: omid@cpp.edu

Office: 2114

Office Hours: TTH 4:00-4:45pm

Art 251



Instructor: Omid

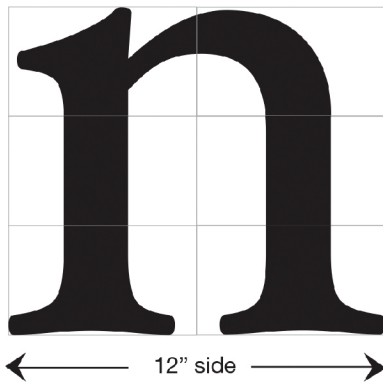
E-mail: omid@cpp.edu

Office: 2114

Office Hours: TTH 4:00-4:45pm

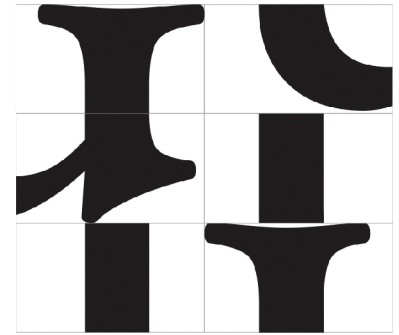
Art 251

Some Ideas on the morticed character assignment.

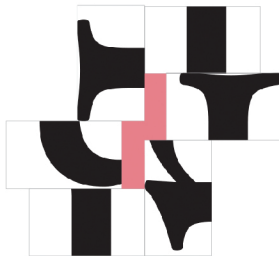
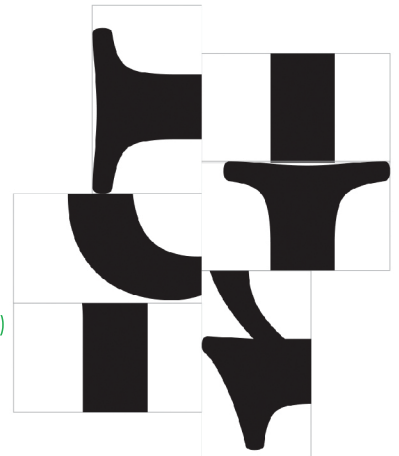


You have choices on how *you may* display your 6 segments, as long your design fits comfortably within the confines of your finished 14" x 17" sheet.

(all horizontal)



(some vertical)



All of your segments must be contiguous (joining), meaning: *you may not* pull any segment away from another.

If you wish, *you may* may shift a unit of 3 segments on a vertical axis up to 2", making sure that your design will still fit comfortably within the confines of your finished 14" x 17" sheet.

